

tcACCESS

Real-time IBM Mainframe Integration

Fact Sheet

The World Wide Web has become the most important information and communication platform. The world is a global marketplace for goods and services – with no borders and no time limits. Innovation in information technology needs to satisfy the constantly-growing demand for more information and 24 x 7 communication.

IT departments with IBM mainframe infrastructures are facing particular challenges. They have to consolidate legacy, client/server, Web and SOA technologies to create an efficient multi-platform information and communication environment.

A company's success is determined by its efficiency in providing customers, employees and management with constant up-to-date information. Therefore, IT departments must be able to always react quickly to new market requirements.

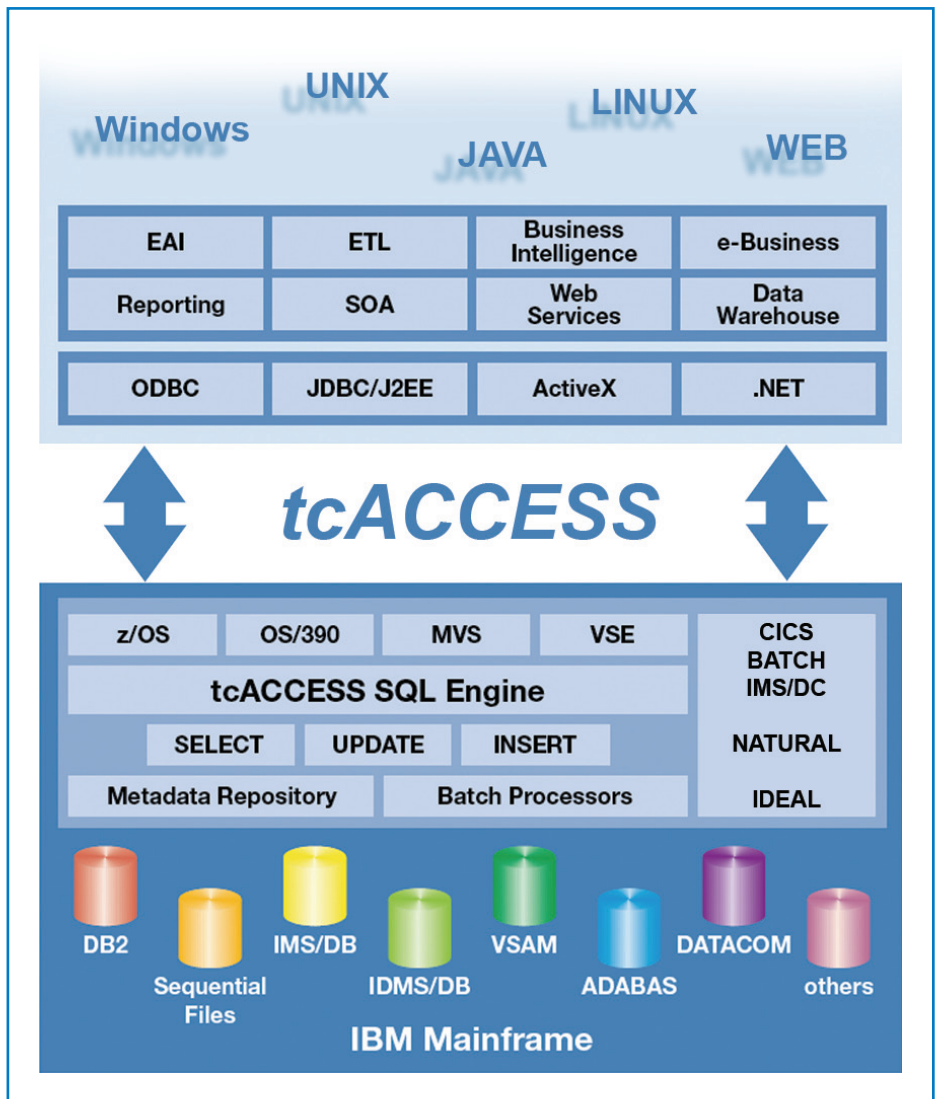
The tcACCESS Solution

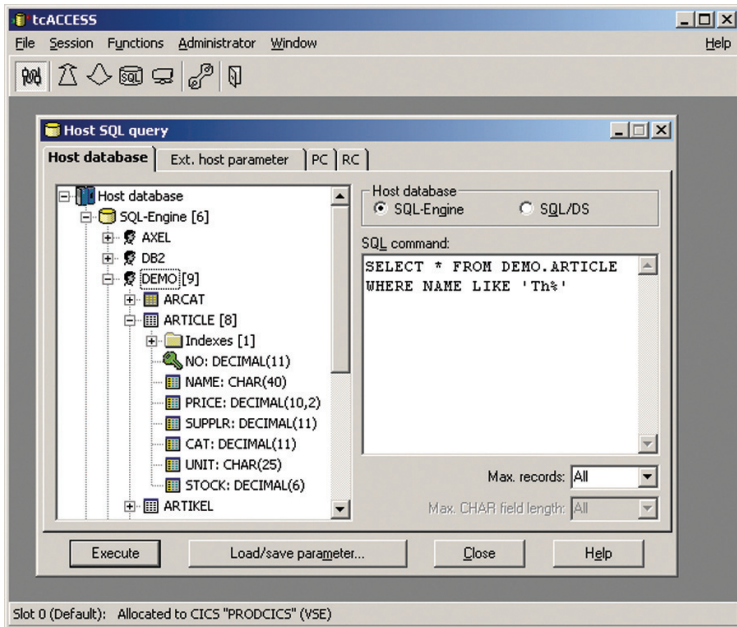
tcACCESS is the innovative software solution that enables IBM mainframe data and applications to integrate with client/server, Web and SOA technologies – without the need for mainframe knowledge or know-how, or programming effort.

tcACCESS Features

- Comprehensive SQL support for IBM mainframe data sources like DB2, VSAM, IMS/DB, DL/1, ADABAS, CA-DATACOM/DB, CA-IDMS/DB, etc.
- High performance ODBC and JDBC read/write access to IBM mainframe data from client/server, Web and SOA applications with no programming effort
- Joins of multiple data sources in a single query (e.g., IMS/DB and VSAM)
- Middleware solution alternative: APIs provide easy access to mainframe programs from client/server, Web and SOA applications
- Easy access to Open Systems databases like Oracle, DB2/UDB, Sybase, MySQL, etc. from Batch, CICS and IMS programs
- Stored procedures support: easy integration of mainframe programs into client/server or Web applications
- SAF interface: Mainframe security (e.g., RACF, TOP SECRET, and ACF2) is enforceable for “new technologies”
- WebSphere MQ support: data exchange via message queues (optional)

- Web Services support: direct JDBC access to mainframe data from Web applications
- SQL and ODBC/JDBC access to 3270 screens from client/server, Web and SOA applications
- Metadata mapping: automatic data structure determination based on copybooks, data dictionaries, DBD and PSB modules for IMS/DB and DL/1
- Easy implementation of “Views”: pre-defined, on-demand SQL queries to all types of mainframe data sources for end users
- Scheduler and Listener functions for mainframe and client to ensure optimum bidirectional data exchange





tcACCESS Architecture

tcACCESS is a modular software solution. It consists of a base system that can either be implemented as a CICS transaction or as a VTAM application. The base system provides its own communication modules. The heart of the system is the tcACCESS SQL Engine which allows access to mainframe data sources using SQL statements. tcACCESS offers Listener components on the mainframe and on the client, as well as scheduling and security functions. Batch processors automate the information exchange processes between distributed applications.

The tcACCESS client components contain their own communication modules. Therefore, no additional middleware is necessary for the exchange of information between mainframe and client (server or workstation). The client components are available as MS-Windows ODBC driver/server and as JDBC server/driver for Unix, Linux and all platforms that support Java.

The tcACCESS import processors allow the automatic mapping of mainframe data. The mainframe data structure information (numeric, alphanumeric, packed, zoned, etc.) is determined based on copybooks, database data dictionaries, and DBD/ PSB modules for IMS/DB and DL/1. The tcACCESS MS-Windows based administrator application provides mainframe data transparency even for users without mainframe knowledge.

SQL queries to access mainframe data can easily be created using drag and drop techniques—no programming is required. The result of the query can be immediately presented and viewed (i.e., Excel, MS-Access, etc.). Direct ODBC or JDBC access to mainframe data from any client/server or Web application can be easily implemented. It is only necessary to assign the tcACCESS driver to the application.

Extensive monitoring functions are provided to create audit trails. Load balancing functions guarantee the most efficient use of mainframe resources. The tcACCESS-provided security or security system already in use (via SAF interface) assures that only authorized users can view and process the data.

Take Advantage of the tcACCESS Solution

- No programming required
- Extensive time savings for all mainframe integration activities
- Fast and easy use of mainframe data with new technologies
- Quick reaction to new market requirements
- Processing of mainframe data without mainframe knowledge
- Less coordination efforts for projects that span multiple systems and platforms
- No investment in additional middleware necessary
- Optimum utilization of all resources
- No training required
- Industry standard interfaces
- Elimination of data redundancies
- Automation instead of manual intervention
- Standardization instead of individual and isolated solutions
- Open for the integration of future technologies
- Unlimited possibilities for a real-time enterprise within IBM mainframe environments

Supported Environments

IBM Mainframe:

IBM z/OS, OS/390, MVS, VSE, z/VSE, VM

Client/Server environment:

MS-Windows, HP-UX, AIX, Solaris Intel and Solaris SPARC, Linux, all platforms supporting Java

Supported connectivity types:

TCP/IP, TN3270, SNA, LU6.2 (APPC), and LU2 (3270 terminal emulation).

WebSphere MQ (optional)

Treehouse Software, Inc.
2605 Nicholson Road, Suite 230 • Sewickley, PA 15143 USA
Phone: 724.759.7070 • Fax: 724.759.7067 • Web: <http://www.treehouse.com>

©Treehouse Software, Inc. All product and company names are trademarks or registered trademarks of their respective owners.

